

# Characteristics of Elephant-shrews along the Congo river

Consolate KASWERA K.  
Kisangani university D.R.C  
[Consolatekyams@yahoo.fr](mailto:Consolatekyams@yahoo.fr)

Supervision

Dudu A. , [duduakaibe@yahoo.fr](mailto:duduakaibe@yahoo.fr)  
Emmanuel G. [emmanuelgilissen@africamuseum.be](mailto:emmanuelgilissen@africamuseum.be)  
Erik V. [erik.verheyen@naturalsciences.be](mailto:erik.verheyen@naturalsciences.be)

## **Introduction**

**The Congo basin a biological hot spot  
Its specific animal and plant diversity remains poorly studied, such as for instance Macroscelids.**

**This investigation was undertaken in the setting of Congo River 2010, an initiative of the Belgian and Congolese Consortium.**

**Studies are exploratory and a base for promising future research.**

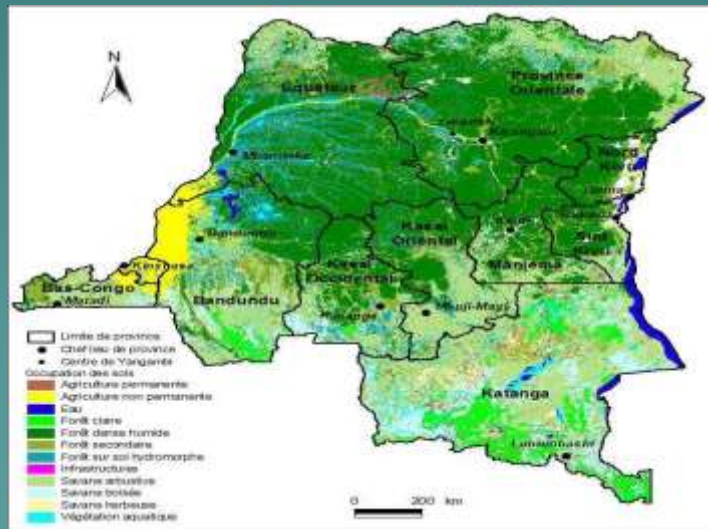
**The goal of this scientific appointment is to describe biodiversity and environmental conditions of the rainforest as well as to promote a lasting management of resources through continuous monitoring of environmental change in reference sites.**



# Study area

Captures have been organized in various forest blocks separated by the Congo River affluents

The visited localities: Yaekela, Lieki, Yafira, Bomane, Kona, Moenge, and Eleko- Mbangi in Oriental Province



## Methodological approach

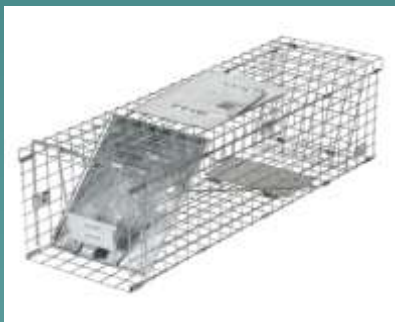
We used trapping in transect lines to catch Sengis

Traps, gates were assembled on different transects

Other specimens have been bought from local people

Specimens were then measured

Tissue samples were taken for DNA and blood samples for virology





## Results

The inventory comprises 20 *Petrodromus tetradactylus tordayi* at Yafira and Eleko- Mbangi on left bank

2 *Rhynchocyon cirnei stuhlmanni* on right bank

The sex ratio 9/11

The trapping of sengis was not successful




**Table 1. Measurements from *Petrodromus tetradactylus tordayi***

	Weight(gr)	Length paw(mm)	Length ear(mm)	Length tail(mm)	Total length(mm)	Length muzzle(mm)
Min	55	46,58	27,33	109	228	30,43
Max	185	54,52	32,09	148	397	43,26
Mean	<b>147,15</b>	51,5705	29,7065	138,7	<b>313,75</b>	<b>39,98</b>
Stand. dev	29,4516	1,66845	1,36143	9,73923	34,8015	3,384
Variance	867,397	2,78374	1,8535	94,8526	1211,14	11,457

Table 2. Measurements from *Rhynchocyon cirnei stuhlmanni*

	Weight(gr)	Length paw(mm)	Length ear(mm)	Length tail(mm)	Total length(mm)	Length muzzle(mm)
Min	425	72,63	30,12	235	498	60,52
Max	450	74,55	32,44	247	555	62,52
Mean	<b>437,5</b>	73,59	31,28	241	<b>526,5</b>	<b>61,52</b>
Stand. dev	17,677	1,3576	1,64	8,4852	40,305	1,414
Variance	312,5	1,8432	2,6912	8450	1624,5	2

## Comments

- **Both species are endemic in D.R. Congo and vulnerable because of the hunting pressure**
  - **The Congo river is a real ecological barrier for the sengis**
  - **The majority of the visited zones were secondary forest and periodically flooded, Sengis prefer forests less disturbed.**
- 





## Acknowledgments

**We thank everybody who made this program possible**

**Good wishes for the project and LEGERA team**

**Thank you for your sustained attention**

